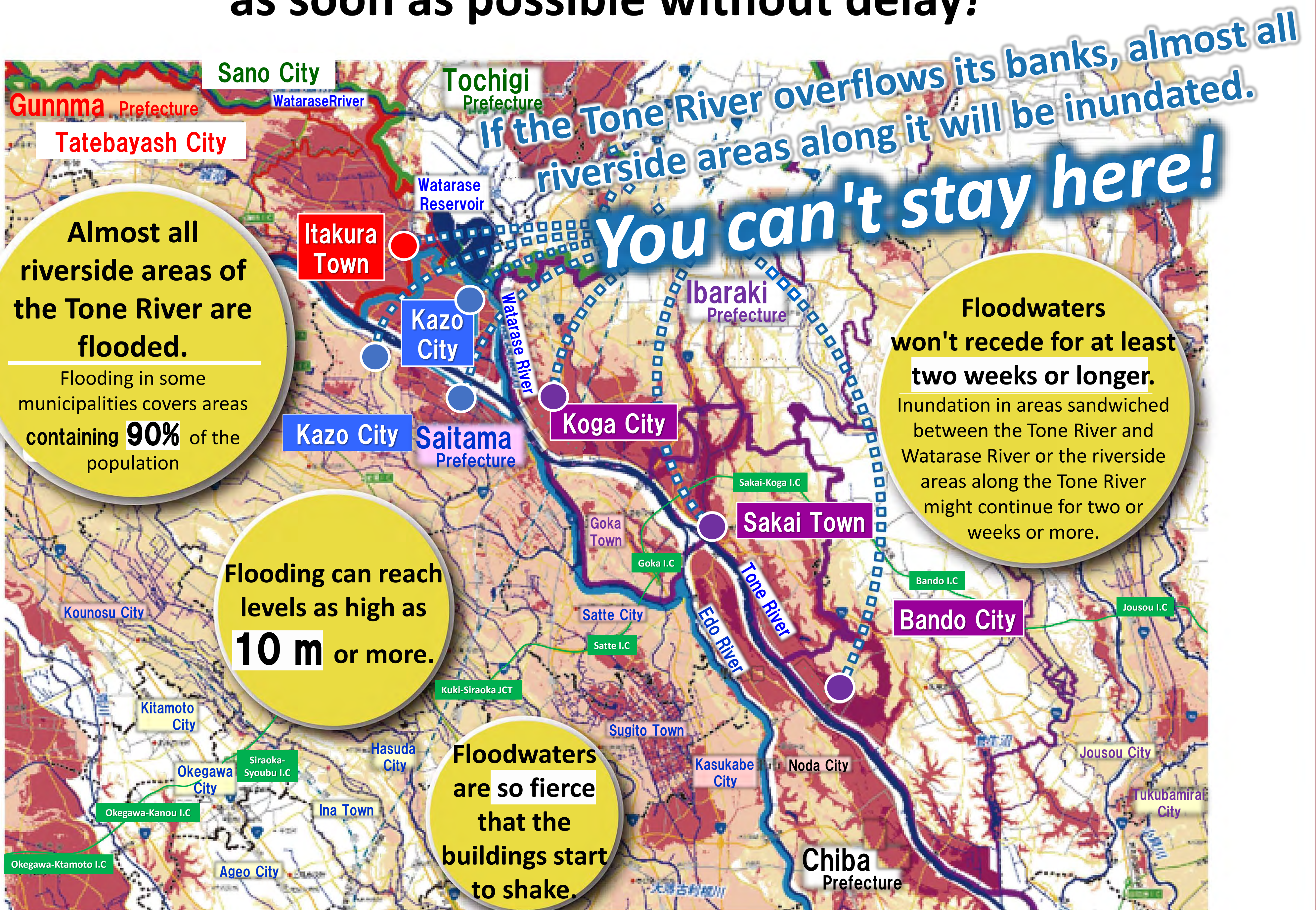


When there is an increased risk of flooding on the Tone River or Watarase River...

Start a **wide-area evacuation***1 as soon as possible without delay!



Local governments are trying to obtain public evacuation shelters, but there are limits to how many persons these shelters can accommodate.

You are strongly advised to consider "finding your own evacuation shelter" *2 such as at the homes of your friends or relatives, other lodging facilities, or at your place of work" on a daily basis.

If any of your relatives or friends lives in a potential flooding area, tell them to consider evacuating or accept them as evacuees if possible.

A first choice
could include the homes of your friends or relatives, other lodging facilities or at your company facilities located in areas less prone to inundation flooding.

Find a suitable place through your own efforts.

A second choice
could include evacuation centers designated by municipalities. Wide-area evacuation centers, for example, are one possibility.

A temporary evacuation location might include emergency evacuation centers

*1 Wide-area evacuation means evacuation to areas under other local governments. It can also mean an eviction evacuation even by under your own local government, to evacuate to an area outside the flooding area such as suburbs other than where your home is located.

*2 Voluntary evacuation center means taking refuge in an evacuation center found by the resident on their own such as at the home of their relatives or friends, their company facility, or a lodging facility that is not a facility designated or obtained by a local government (excluding cases where needing indoor safety or sheltering-in-house)