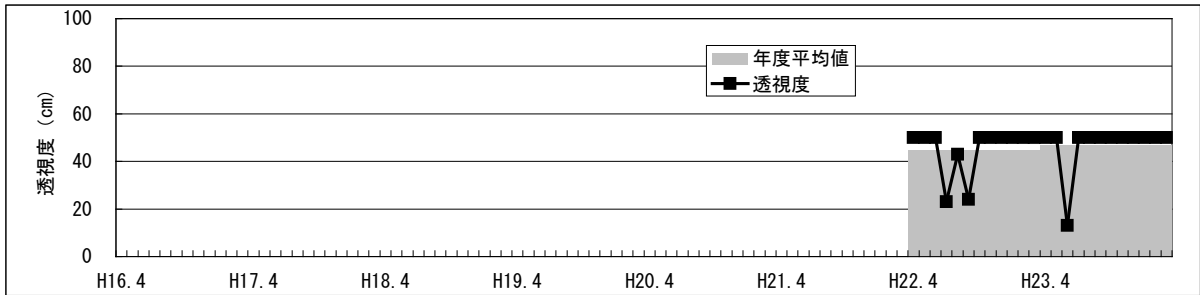
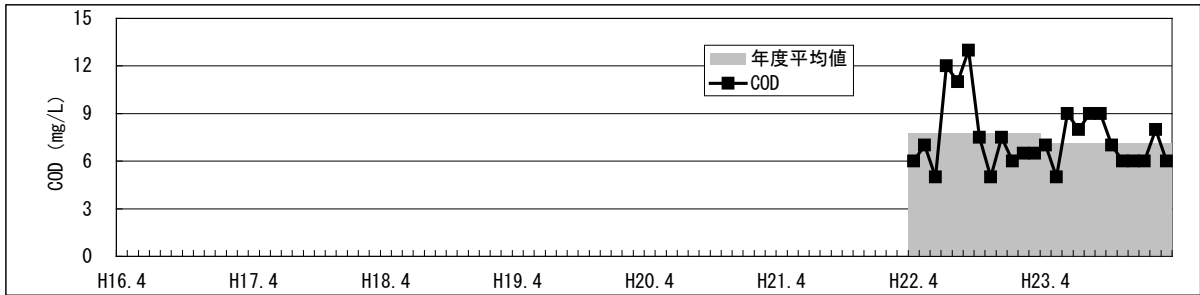
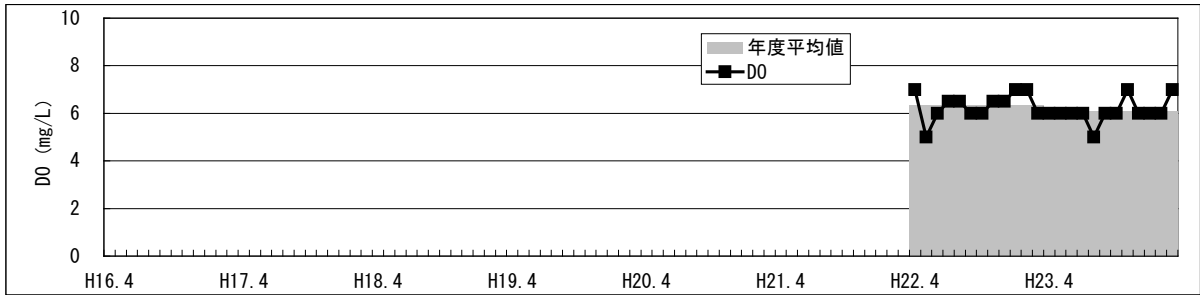
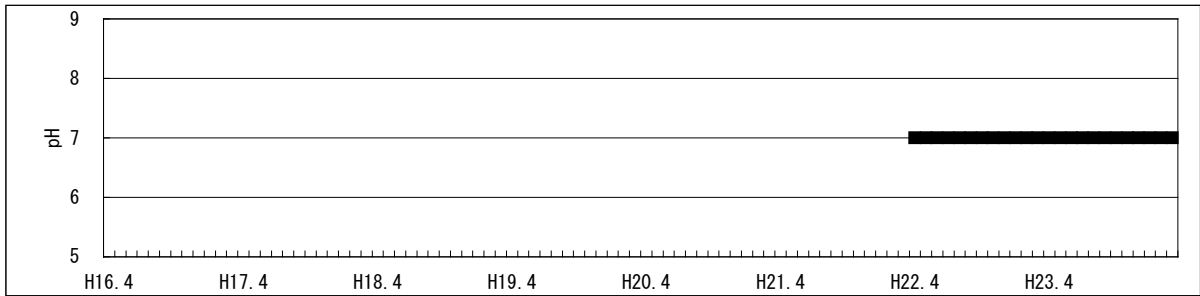
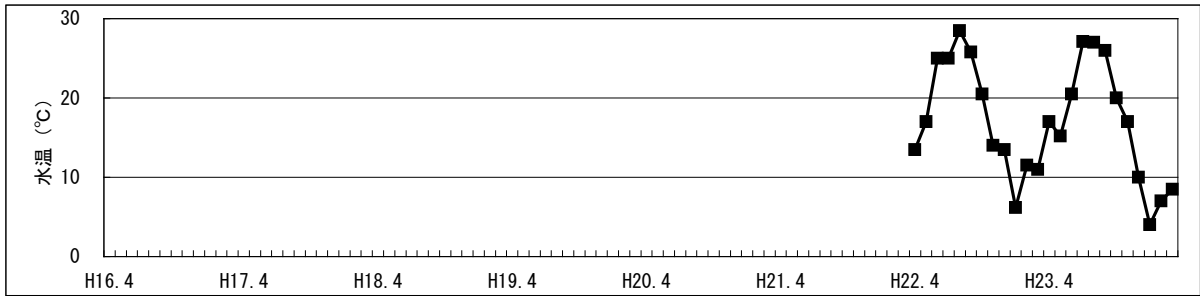


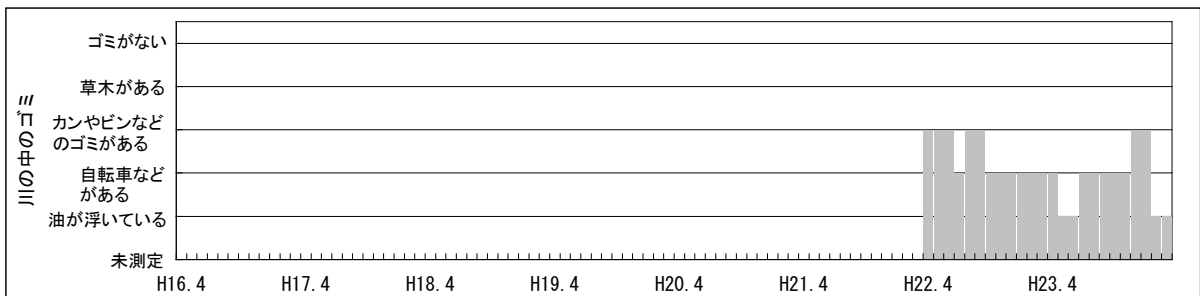
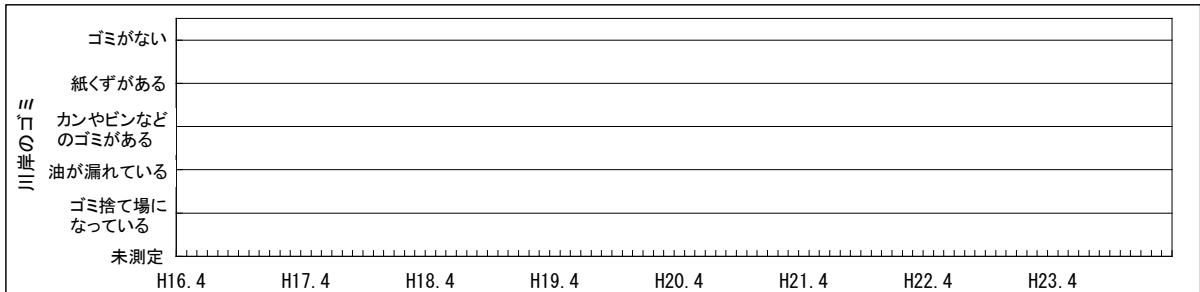
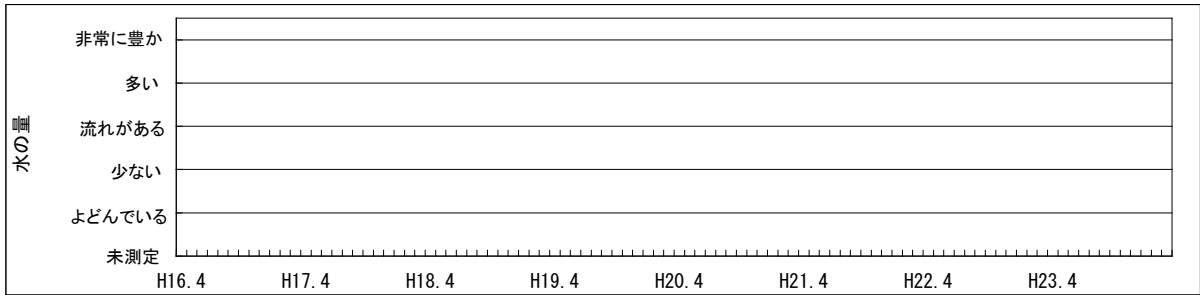
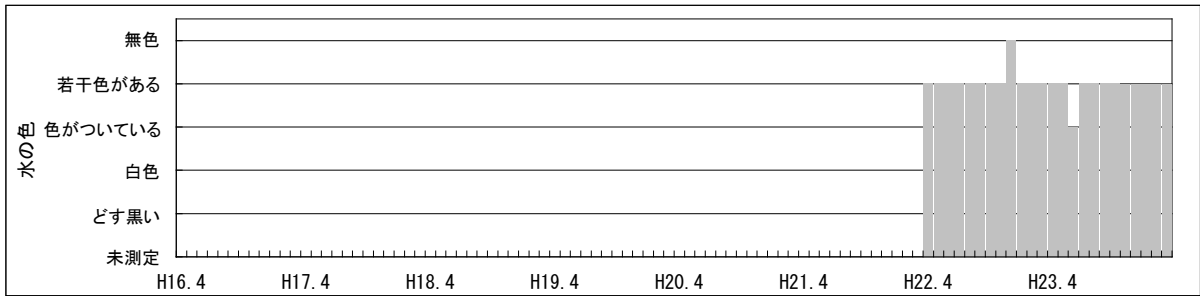
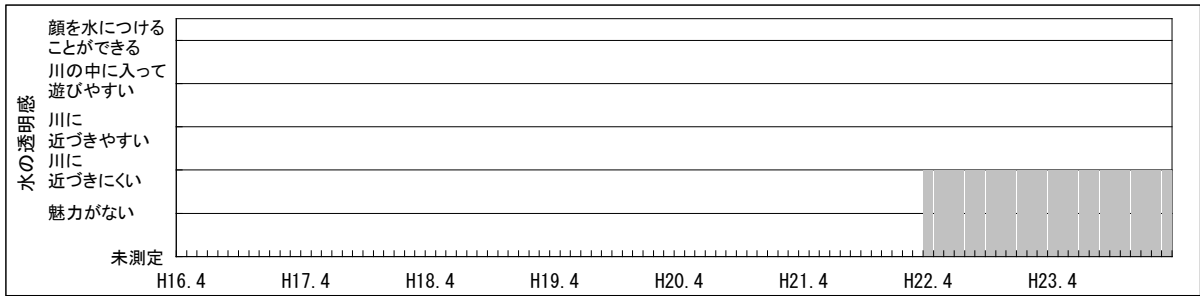
【水環境モニタリング結果（毛長川・新砂子路橋）】

①水質調査結果（水温・pH・DO・COD・透視度）



【水環境モニター結果（毛長川・新砂子路橋）】

②見た目の調査結果（水の透明感・水の色・水の量・川岸のゴミ・川の中のゴミ）



【水環境モニター結果（毛長川・新砂子路橋）】

③見た目の調査結果（川底・におい・生き物・水辺の利用）

