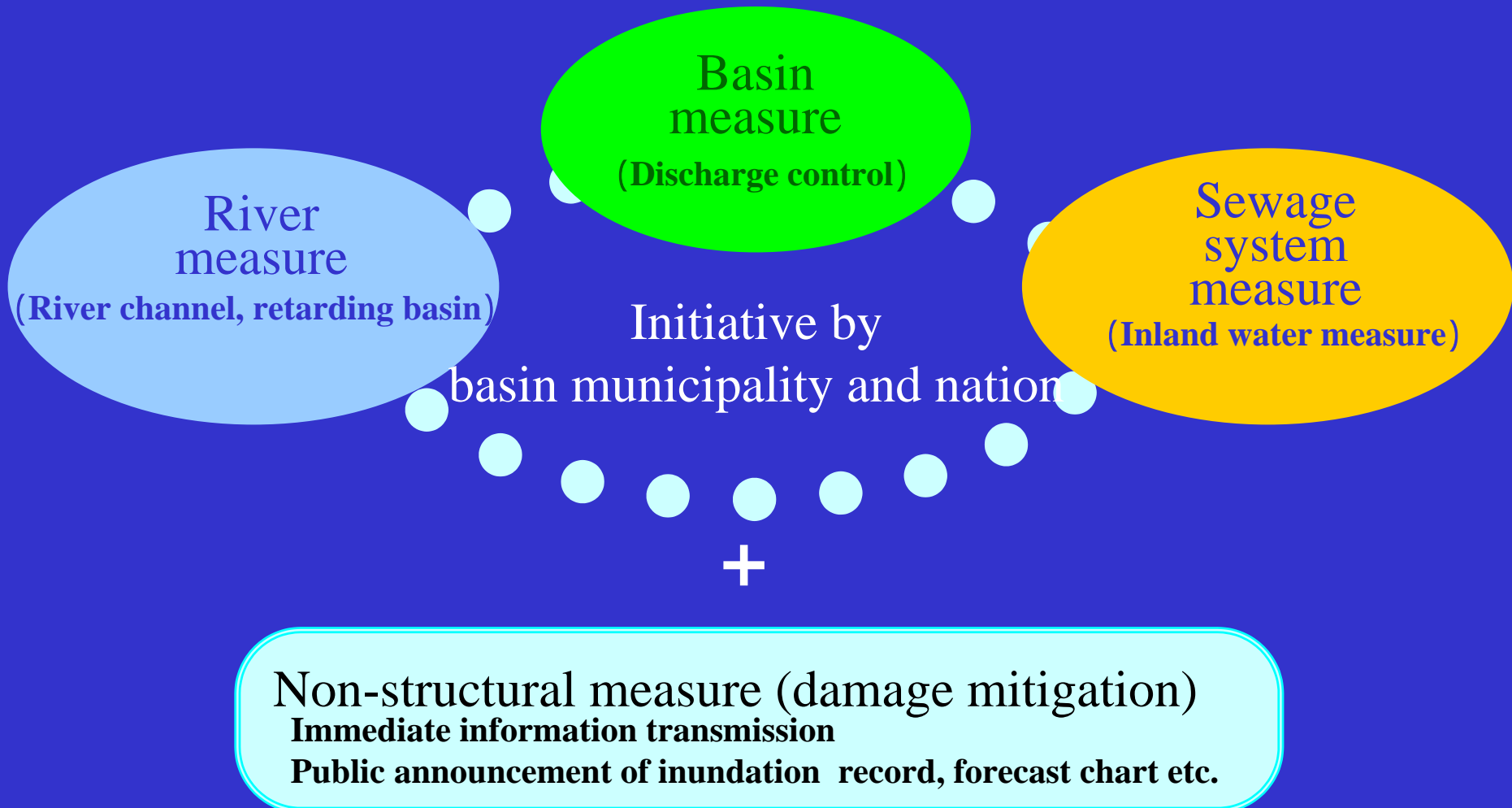


## 2 . Tsurumi River Approach

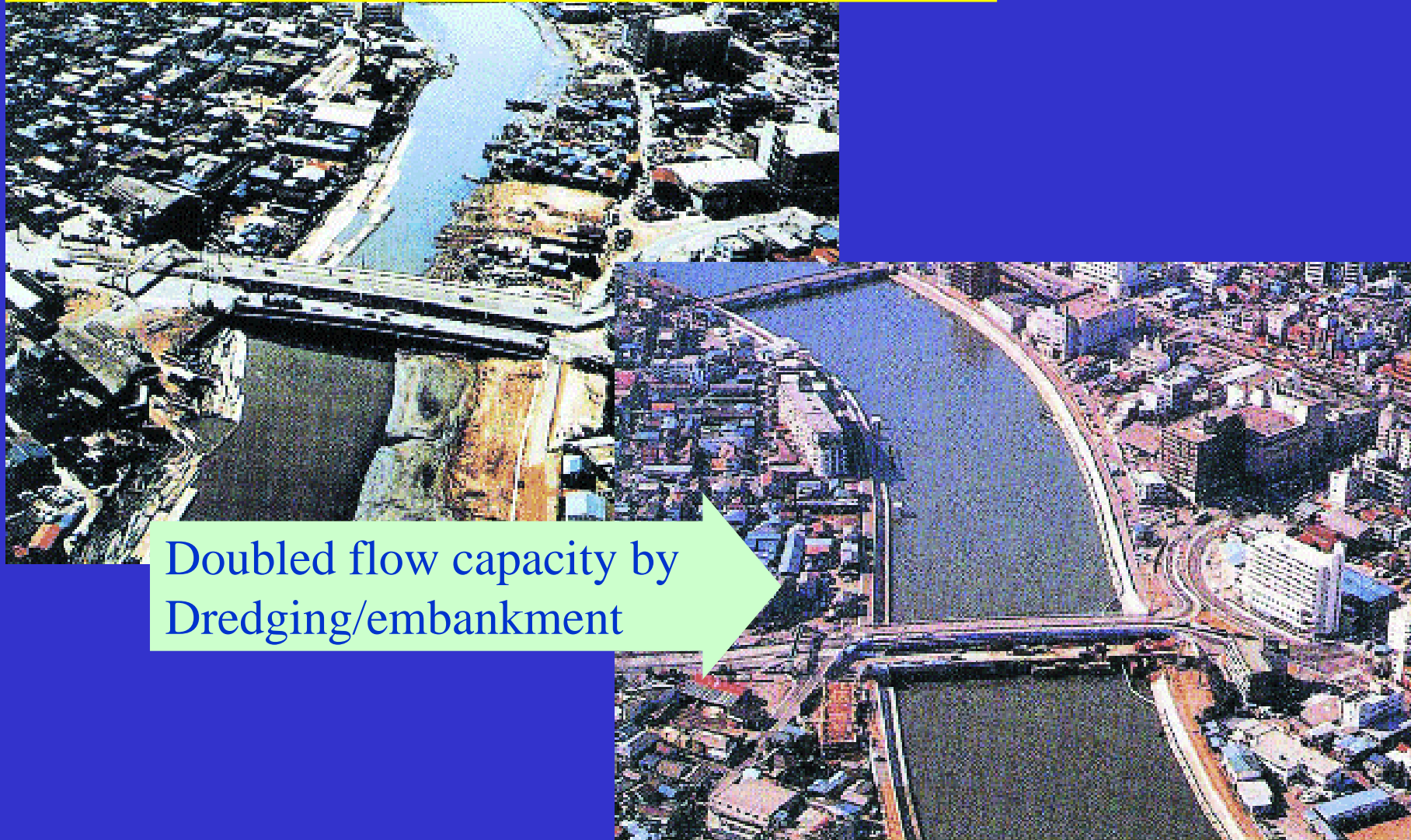
# 1 ) Approach of Tsurumi River basin

- Approach to the comprehensive flood control  
Flood control measure of immediate safety improvement throughout the basin



# 1 ) Approach of Tsurumi River basin

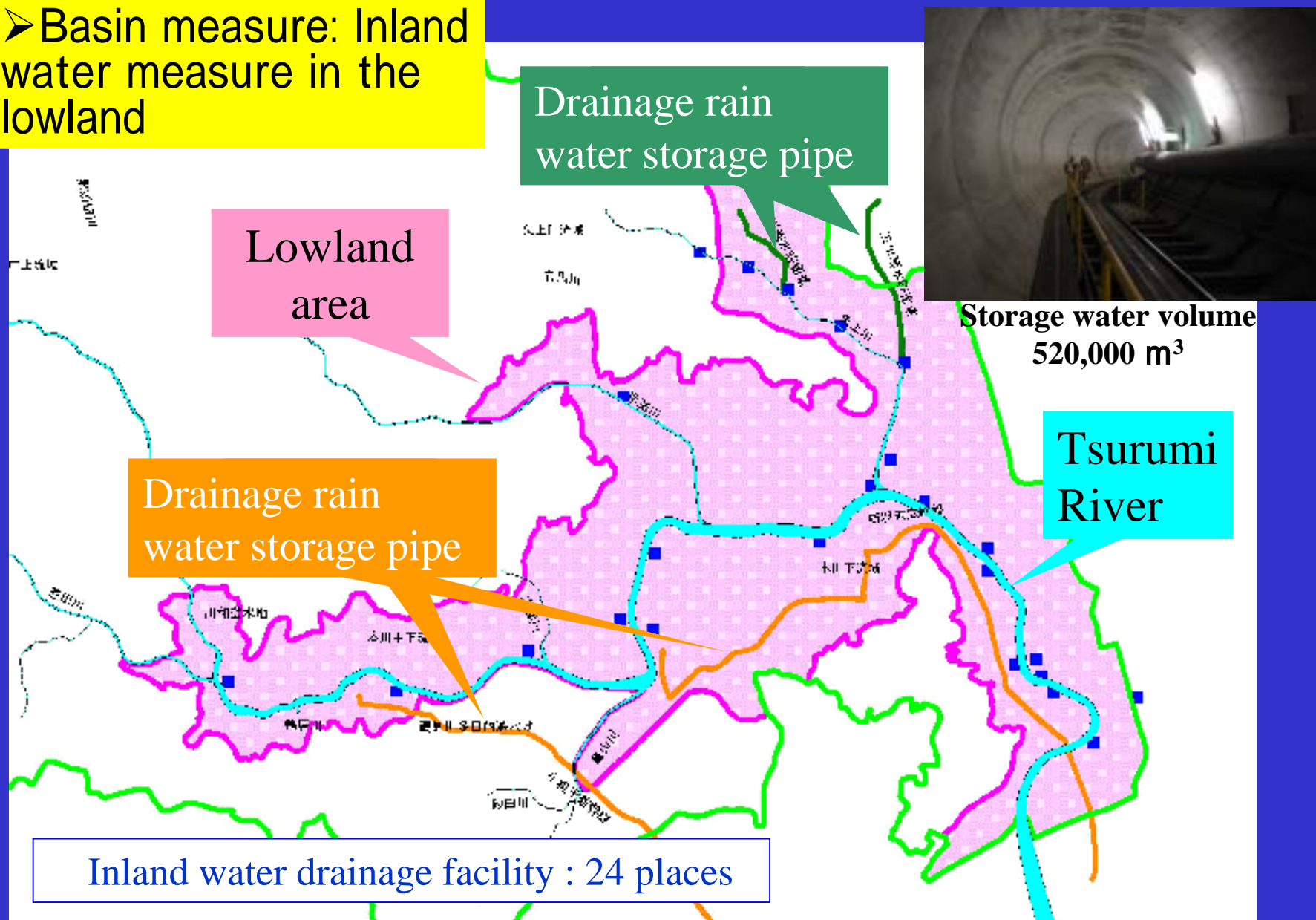
- River measure:  
Dredging/embankment, retarding basin



Doubled flow capacity by  
Dredging/embankment

# 1) Approach of Tsurumi River basin

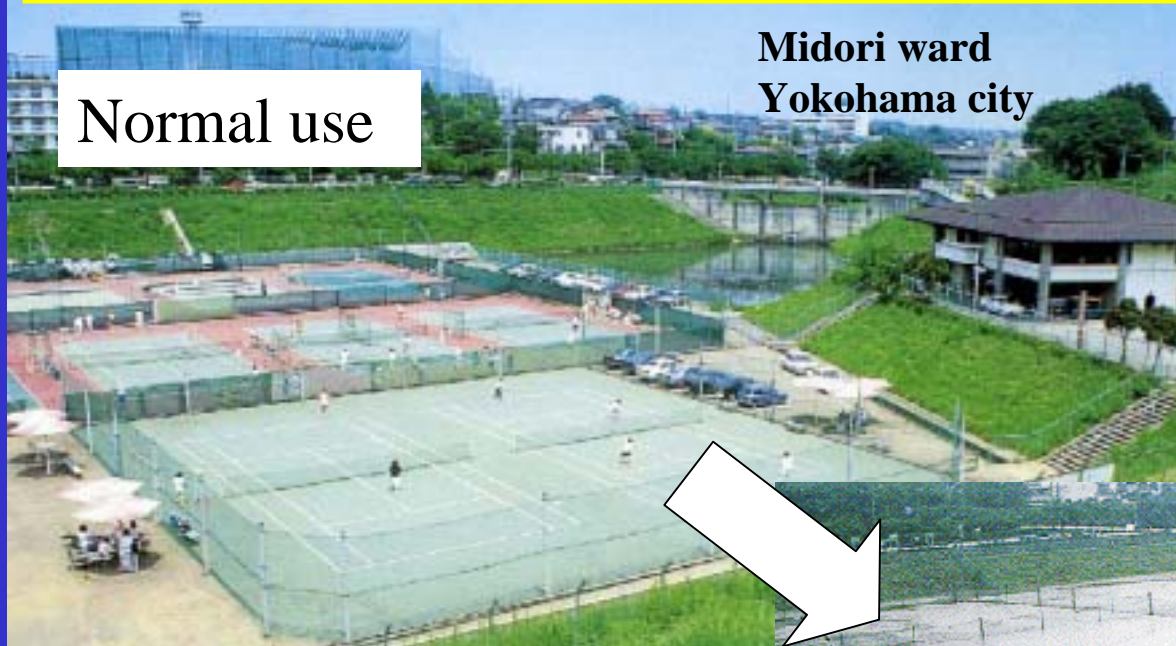
➤ Basin measure: Inland water measure in the lowland





# 1) Approach of Tsurumi River basin

- Basin measure: Runoff control facility setting in the developed area



Midori ward  
Yokohama city

Normal use

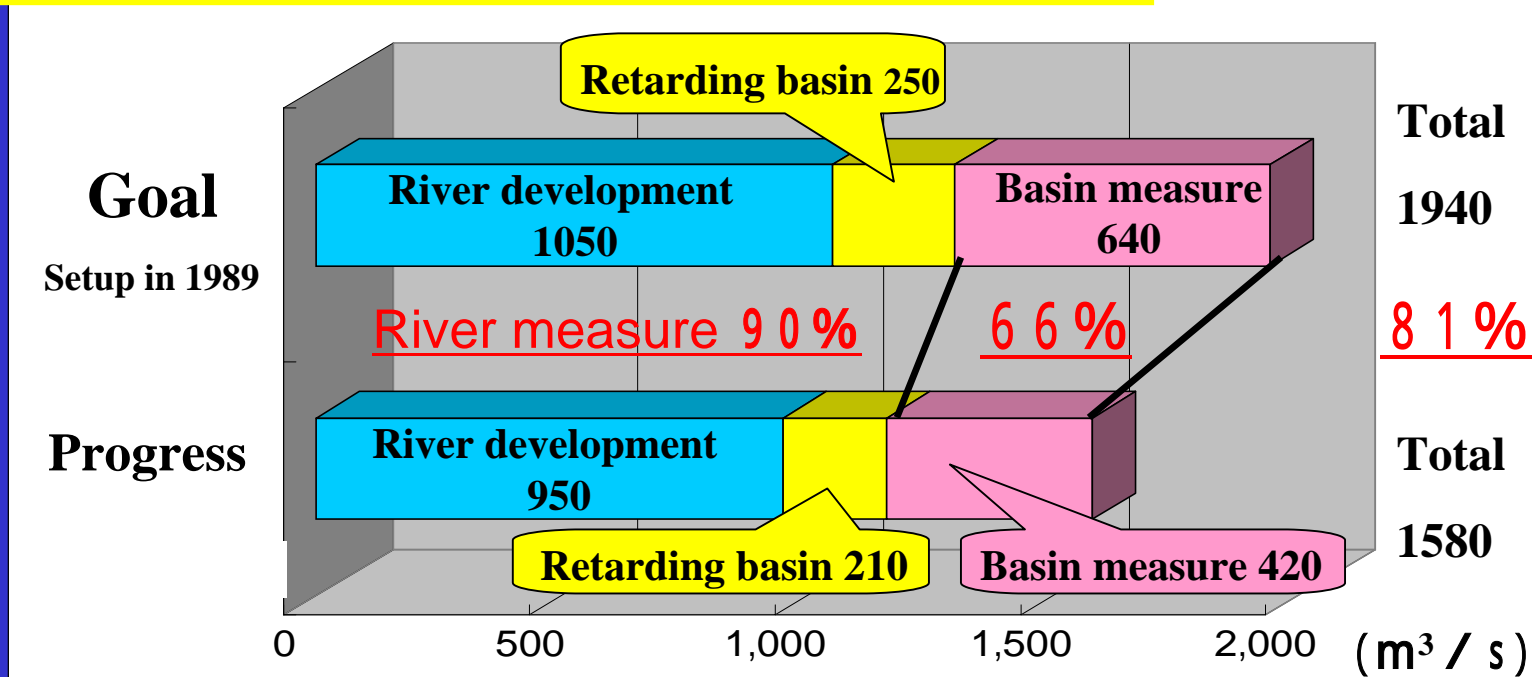
Storage water volume  
97,000 m<sup>3</sup>



Flooding time

# 1) Approach of Tsurumi River basin

## ➤ Promotion of comprehensive flood control



Improvement of flood control reliability

However,

Advancing urbanization (didn't reach land use control)

Inadequate follow-up (no legal power against basin measure)

Inadequate consideration for issues such as water quality, water volume, natural environment and river use

# 1) Approach of Tsurumi River basin

➤ Approach based on each administration

Tokyo Prefecture

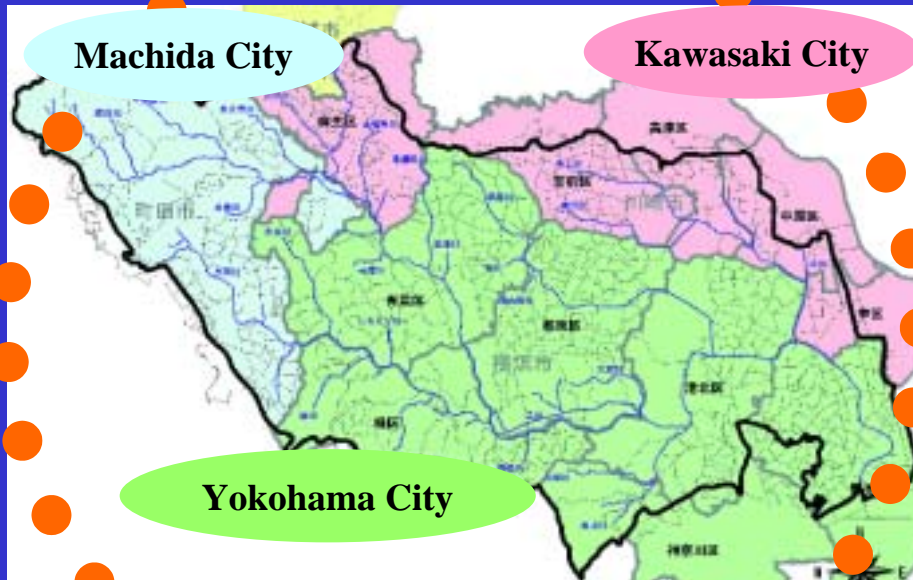
Kanagawa Prefecture

Machida City

Kawasaki City

Yokohama City

Ministry of Land,  
Infrastructure and Transport



NO

✓ Issue and objective sharing from basin viewpoint



✓ Adequate role-sharing between river and basin is necessary



Integrated water management based on the river basin “Land Use Management”

# 1) Approach of Tsurumi River basin

➤ Approach mainly lead by administration



Citizen

Enterprise

National Government

Local Government

NO

- Participation of Citizen and Enterprise are necessary



“Land Use Management”  
through various partnership  
and collaboration



# 1) Approach of Tsurumi River basin

➤ New approach

YES

Tokyo Prefecture

Kanagawa Prefecture

Machida City

Kawasaki City

Citizen

Sound water cycle

Enterprise

Yokohama City

Ministry of Land,  
Infrastructure and Transport

Safe, secure and comfortable basin society

+

Sustainable development Water cycle Society



- ✓ Drawing up of the “River Basin Management Plan for the Tsurumi River Basin” showing the vision and its implementation measure.
- ✓ “Committee of the River Basin Management Plan” is established. It was settled on by citizens, enterprises, local government, water manager, based the expert's advice .